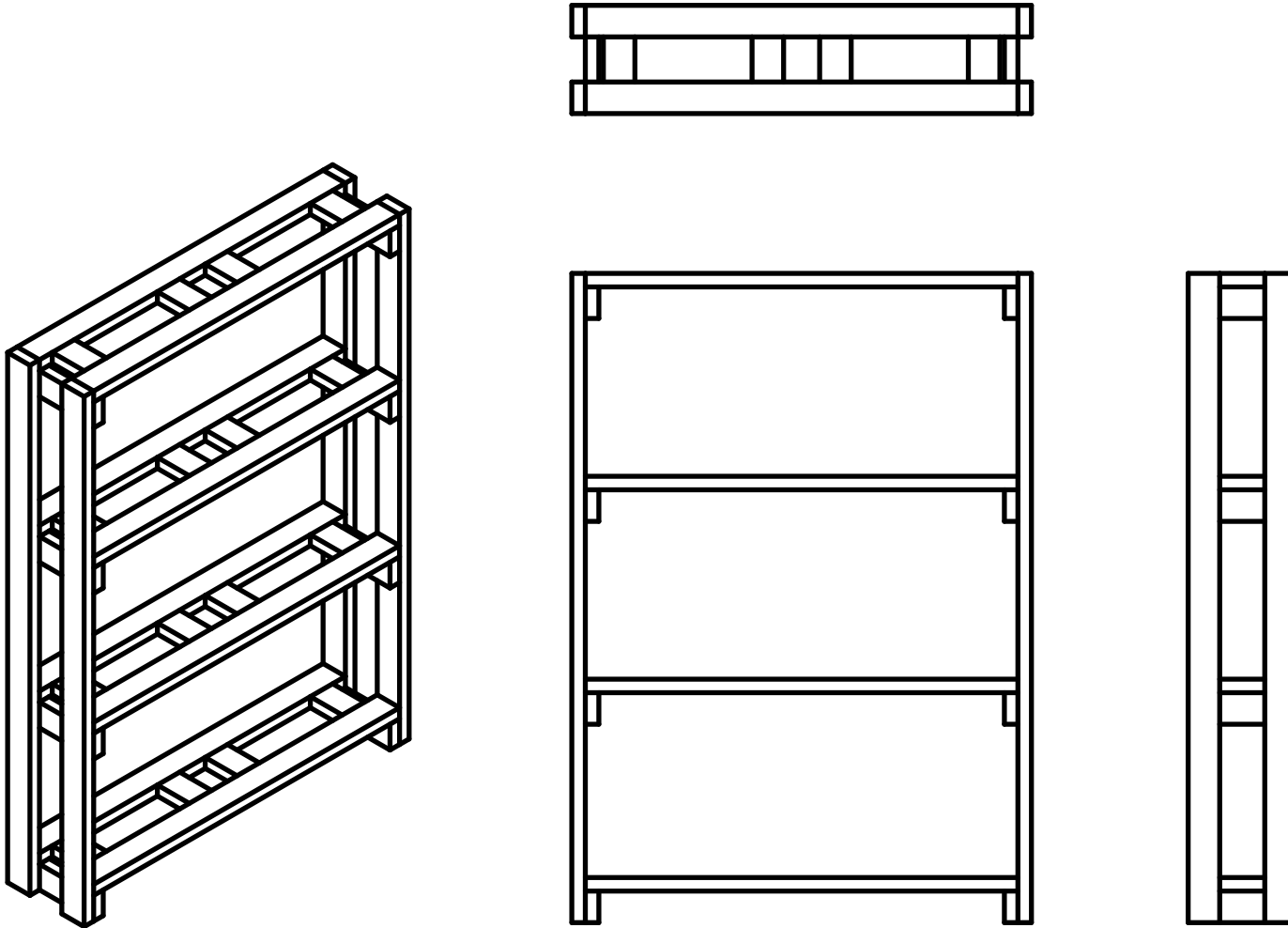
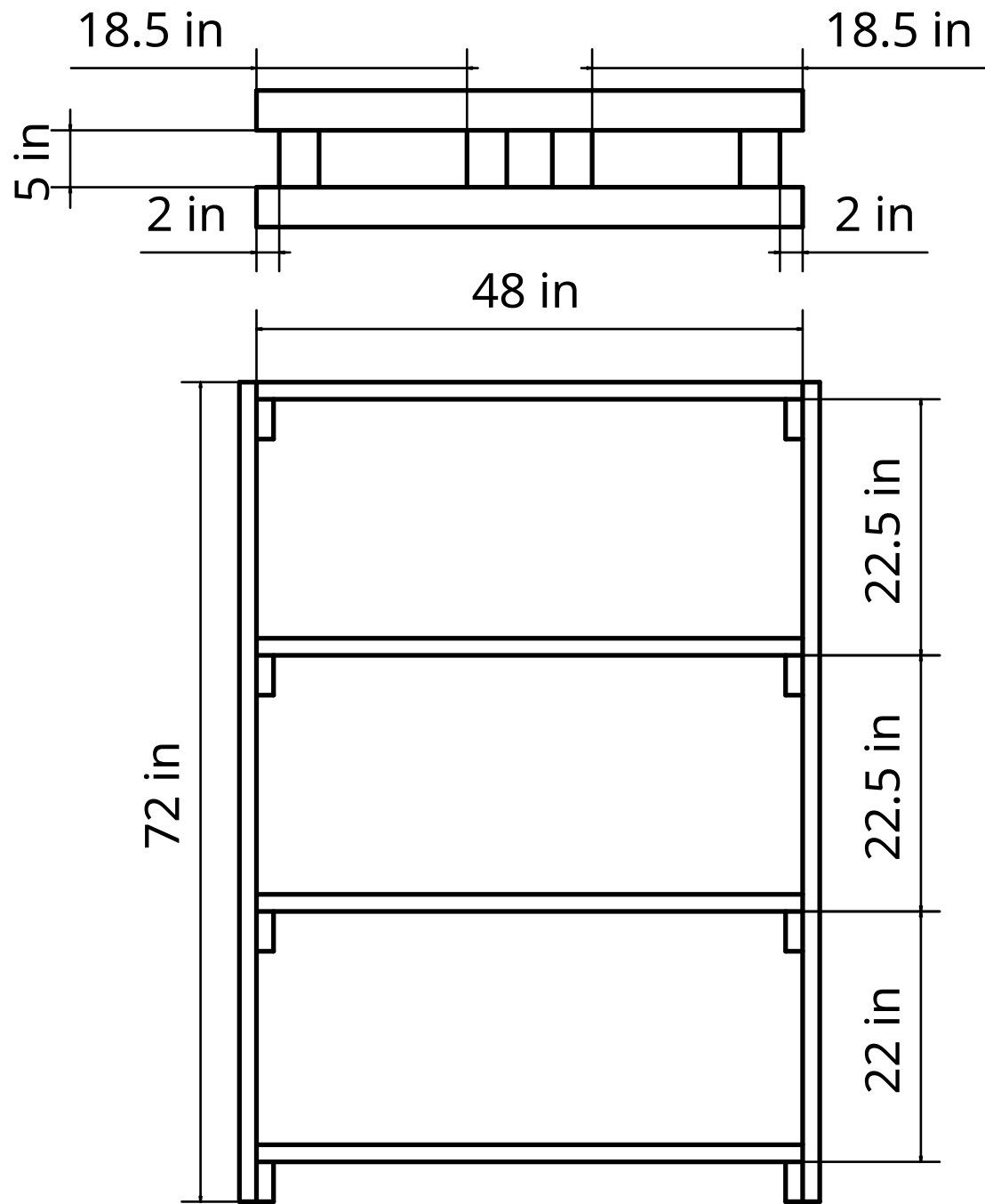
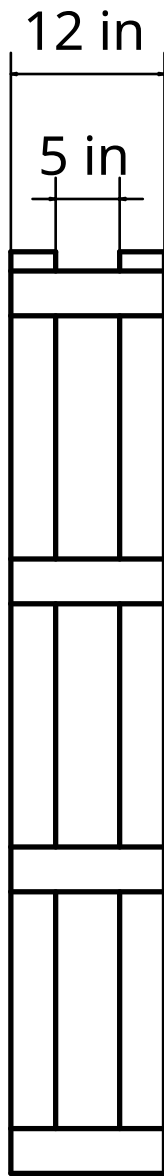


# Seed Starting Shelves





## Materials Needed

1. 8x 8ft 2x4 (construction grade is fine)
2. Extra 8ft 2x4 if you don't have scraps for sixteen 5 inch pieces
3. 32x 2.5 inch screws (for attaching shelf supports to legs)
4. 32x 3 inch screws (for attaching shelves to shelf supports)

## Instructions

1. Cut 4 of the 2x4s into a 72 inch piece and two 12 inch pieces each, for a total of four 72 inch pieces and eight 12 inch pieces.
2. Cut 4 of the 2x4s into two 48 inch pieces each, for a total of eight 48 inch pieces.
3. Cut a total of sixteen 5 inch pieces from scraps, if you have them, or the last 2x4.
4. Lay two of the 72 inch legs on a flat surface, and use screws to attach three of the 12 inch pieces across the two legs at 1.5 inches, 24 inches, and 46.5 inches from the top. Attach another 12 inch piece flush with the bottom of the legs.
5. Do this with the other set of legs and remainder of the 12 inch pieces.
6. Attach the 48 inch pieces to each 12 inch support piece, at the leg.
7. Attach the four of the 5 inch pieces to each shelf, at 2 inches and 18.5 inches from the ends.